

FC SERIES OUTDOOR STANDARD LED PRODUCTS

NewStar
Display Solution

MODEL NO.: FC1000D
OUTDOOR FIXED LED DISPLAY
DIP OUTDOOR FRONT & BACK SERVICE
STANDARDIZED CABINET SIZE 960X960MM
SEAMLESS CONNECTION
DIE-CASTING ALUMINUM CABINET MATERIAL



FEATURES



ENERGY SAVING



HIGH BRIGHTNESS



IP 65 WATER PROOF



HIGH CONTRAST RATIO

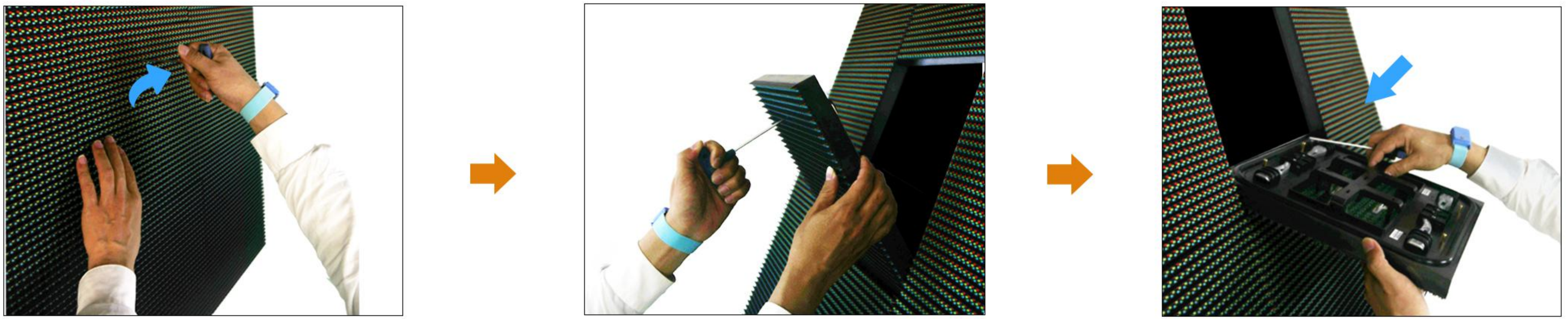


EASY MAINTENANCE



HIGH-DEFINITION DISPLAY

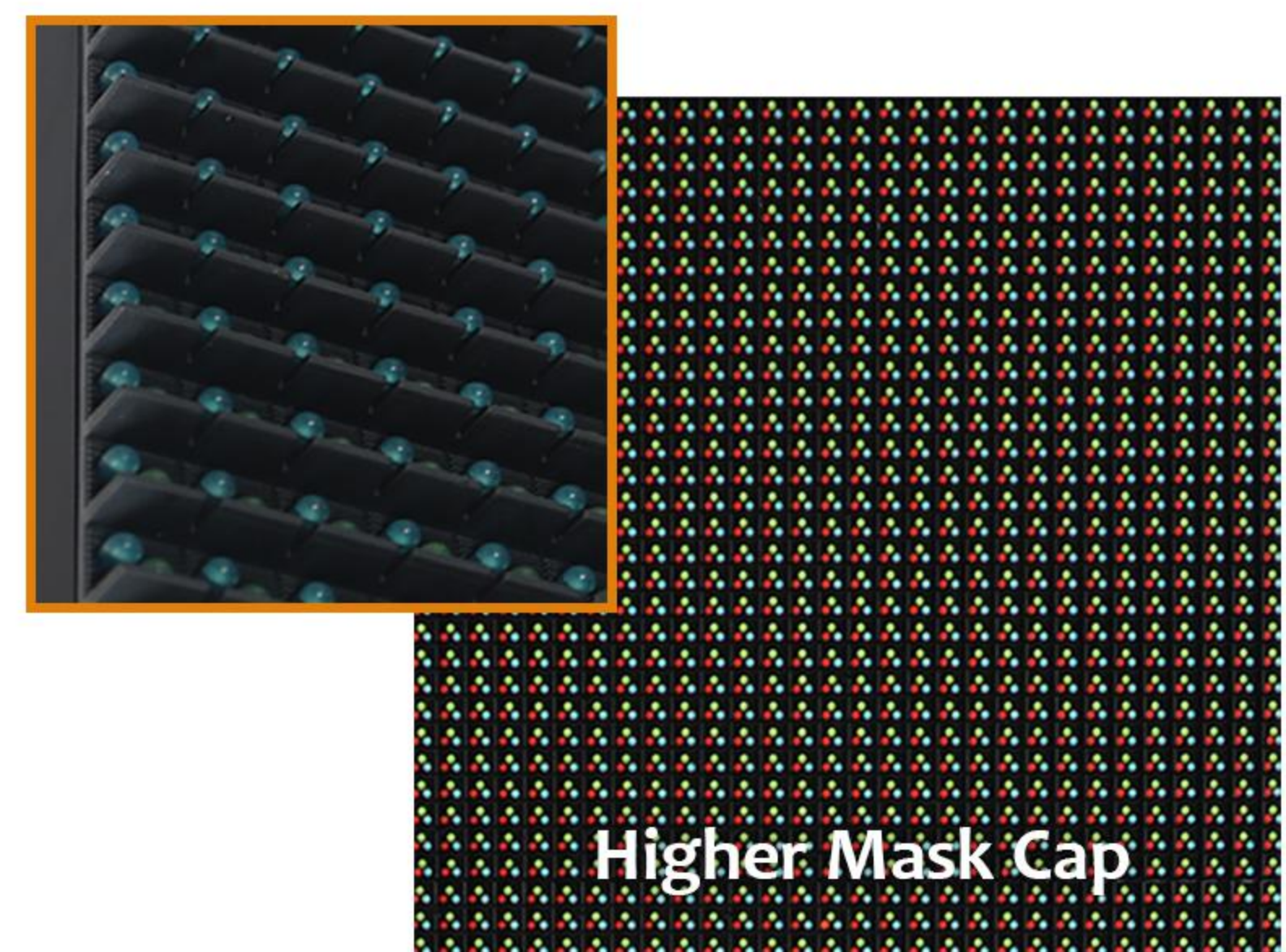
01 Fast And Easy Maintenance



- Step 1: Use "T" Wrench and insert one hole of the module then rotate "T" wrench in anti-clockwise direction to unlock.
- Step 2: Repeat step 1 on the other hole to release the module separate from cabinet easily.
- Step 3: Disconnect power & data cable.

High Quality LEDs

02



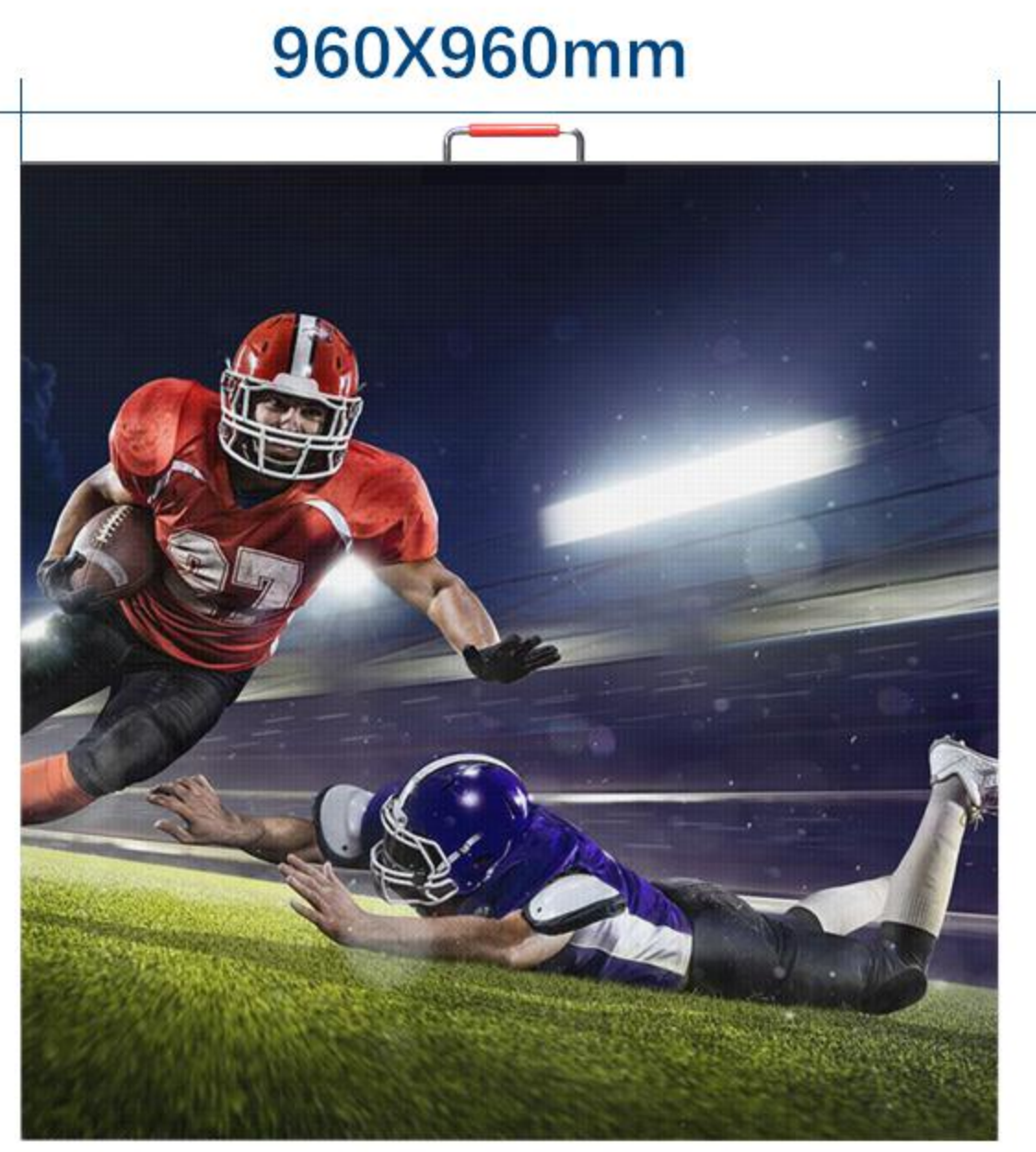
Two optional mask caps designed special for outdoor LED advertising, and tested for a better visual experience with maximum brightness and high contrast ratio.





03 Innovated Seamless Connection



High precision and integral structure, flexibly fast locking function, used die casting aluminum cabinet material with no gap assembly. FC series products comply with high IP rating that ensure all component can be able to operate even in extreme enviroment conditions.

FC 1000D SPECIFICATIONS



	ITEMS	PARAMETERS
Physical Parameters	LED Configuration	DIP346
	Pixel Pitch (mm)	10
	Module Resolution(dots)	32x32
	Panel Resolution(dots)	96x96
	Pixel Density (dots /m ²)	10,000
	Module Size (W x H x D) /(mm)	320x320
	Panel Dimension (W x H x D) /(mm)	960x960
	Panel Material	Die Casting Aluminum
	Panel Module Composition(W xH)	3x3
	Panel Weight (Per/pcs)	38
	Module Weight(Per/kg)	2
Optical Processing	Color processing (Bit)	16
	Grey Level	65536
	Refresh Rate (Hz)	≥1920
	Driving Mode(scan)	1/4
	Brightness (nit)	7500
	Viewing Angle (H/V)	110/45
Electrical Parameters	Input Voltage (V)	AC110/220V±10%
	Input Power Frequency (Hz)	50/60
	Max Power (W/m ²)	439
	Average Power (W/m ²)	146
Operating Environment	Storage Temperature (°C)	From-10 to 50
	Operating Temperature (°C)	From-20 to 60
	Storage Humidity (RH)	10%~90%
	Operating Humidity (RH)	10%~90%
	IP Rating	IP65/IP54
	Lifetime (hrs)	100000
	Usage Environment	Outdoor fixed installation
	Panel Maintenance Method	Front/Rear Maintenance
Quality warranty	   	



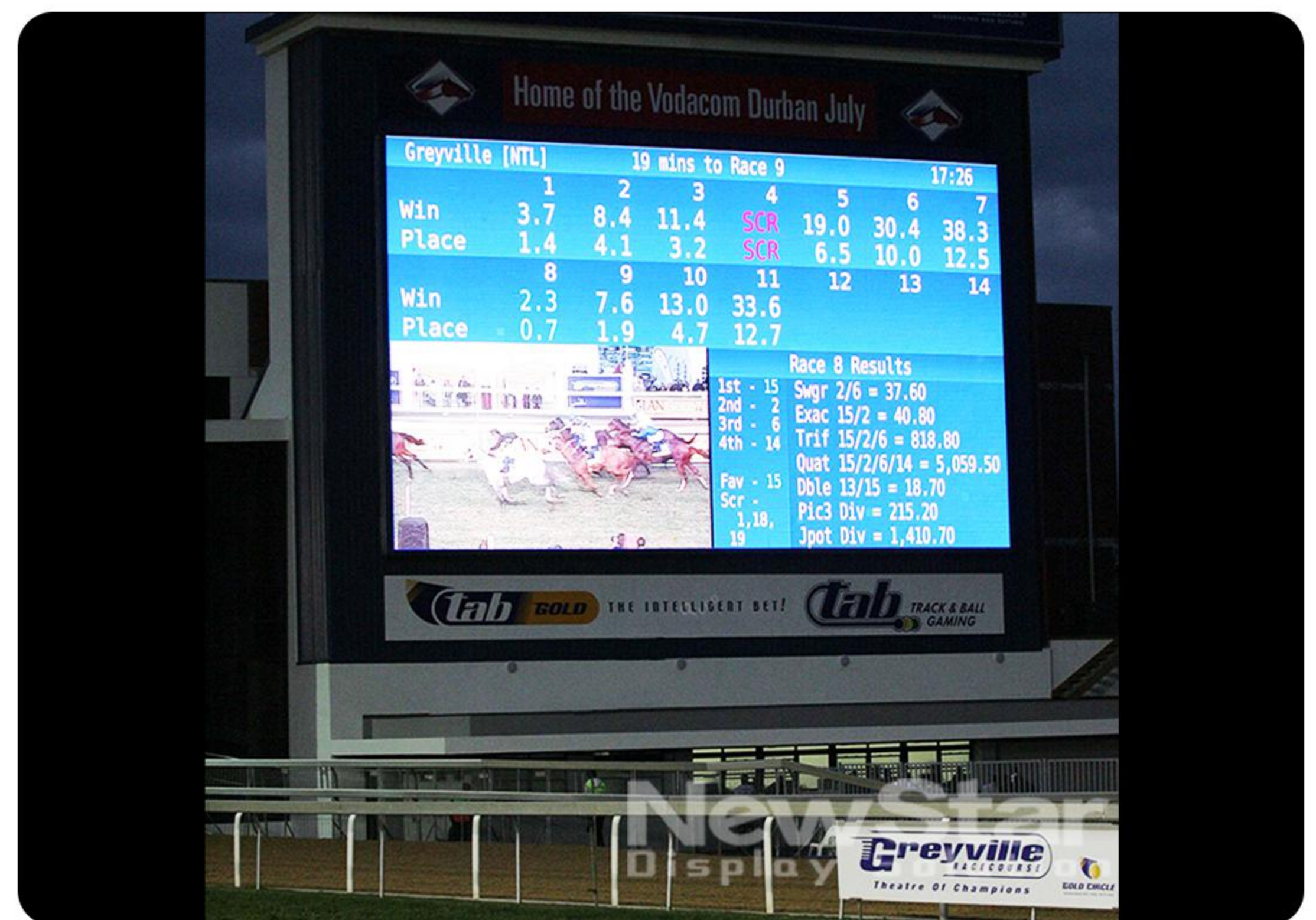
Gaming & Lottery Advertising



Cinema Leisure time



Customized Outdoor Advertising Project



Stadium Project in South Africa



For Sales & New Arrivals Advertising



Lifestyle & News in Outdoor Display

SHENZHEN NEWSTAR OPTOELECTRONICS CO., LTD

No.10, Kukeng Ave., Tongfuyu Industry Park, Guanlan Str. Longhua District, Shenzhen City, China

+86 131 2896 3818

info@newstar-led.com

www.newstar-led.com

