

FC SERIES OUTDOOR STANDARD LED PRODUCTS

NewStar
Display Solution

MODEL NO.: FC400
OUTDOOR FIXED LED DISPLAY
SMD OUTDOOR FRONT & BACK SERVICE
STANDARDIZED CABINET SIZE 960 X 960MM
SEAMLESS CONNECTION
DIE-CASTING ALUMINUM CABINET MATERIAL



PRODUCT DESCRIPTION



ENERGY SAVING



HIGH CONTRAST RATIO



HIGH BRIGHTNESS



EASY MAINTENANCE

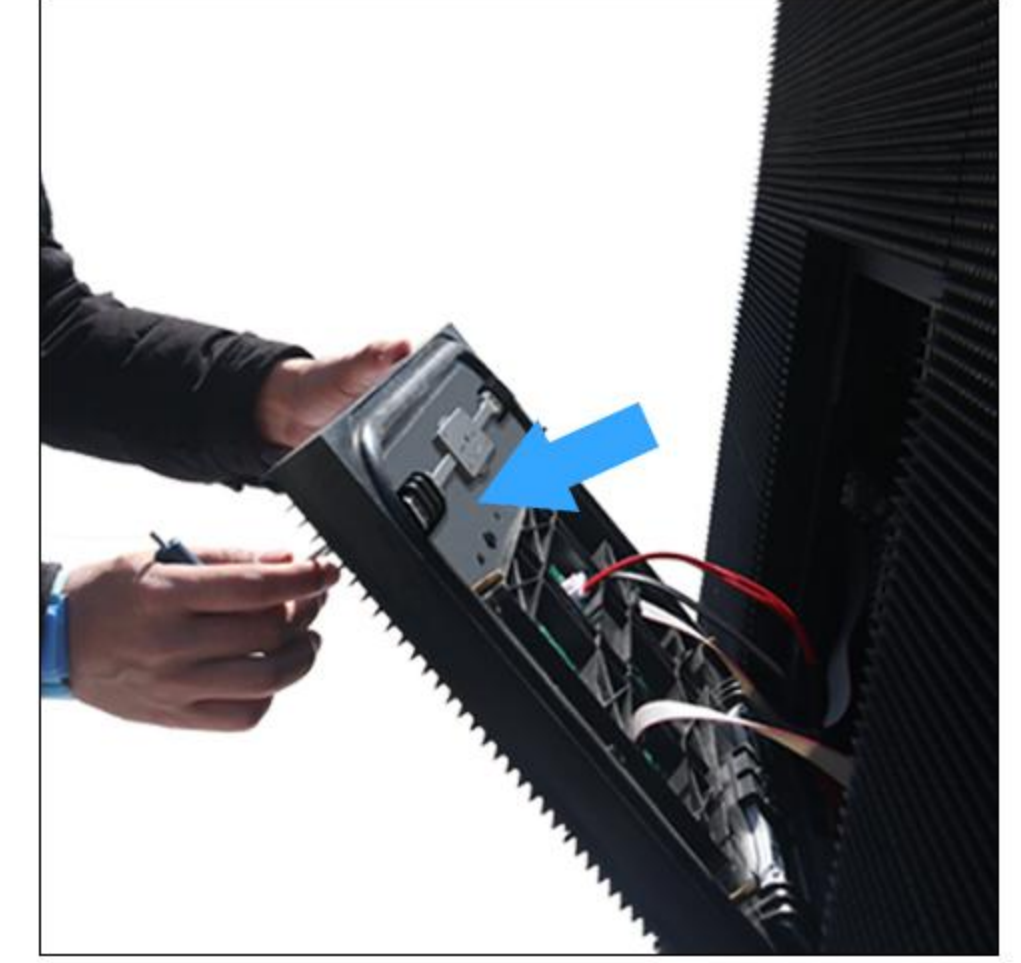
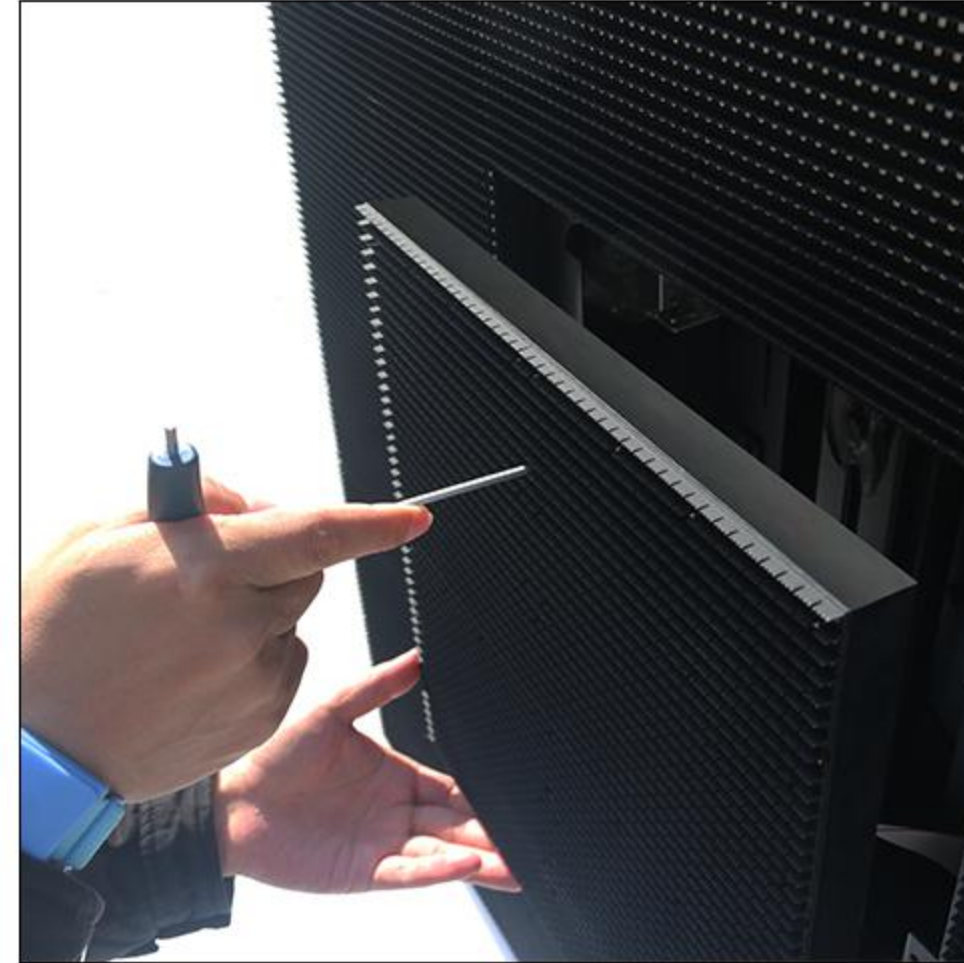
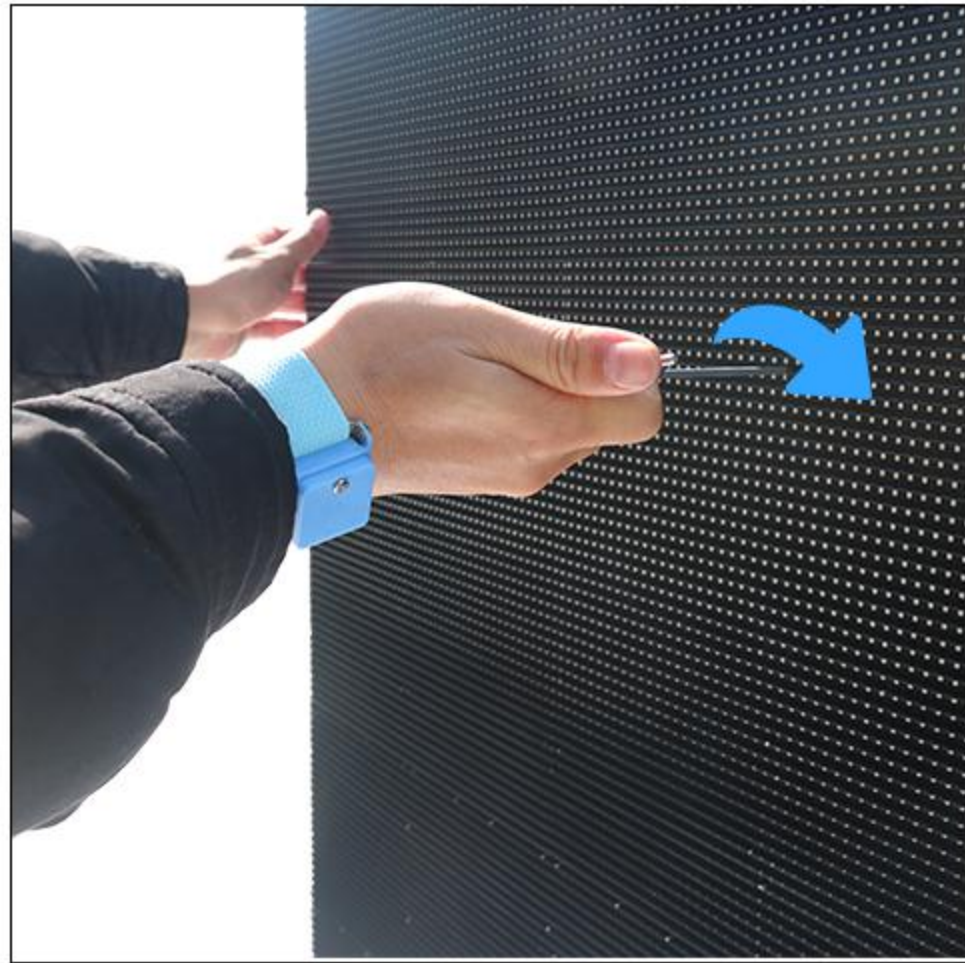


IP65 WATER PROOF



HIGH-DEFINITION DISPLAY

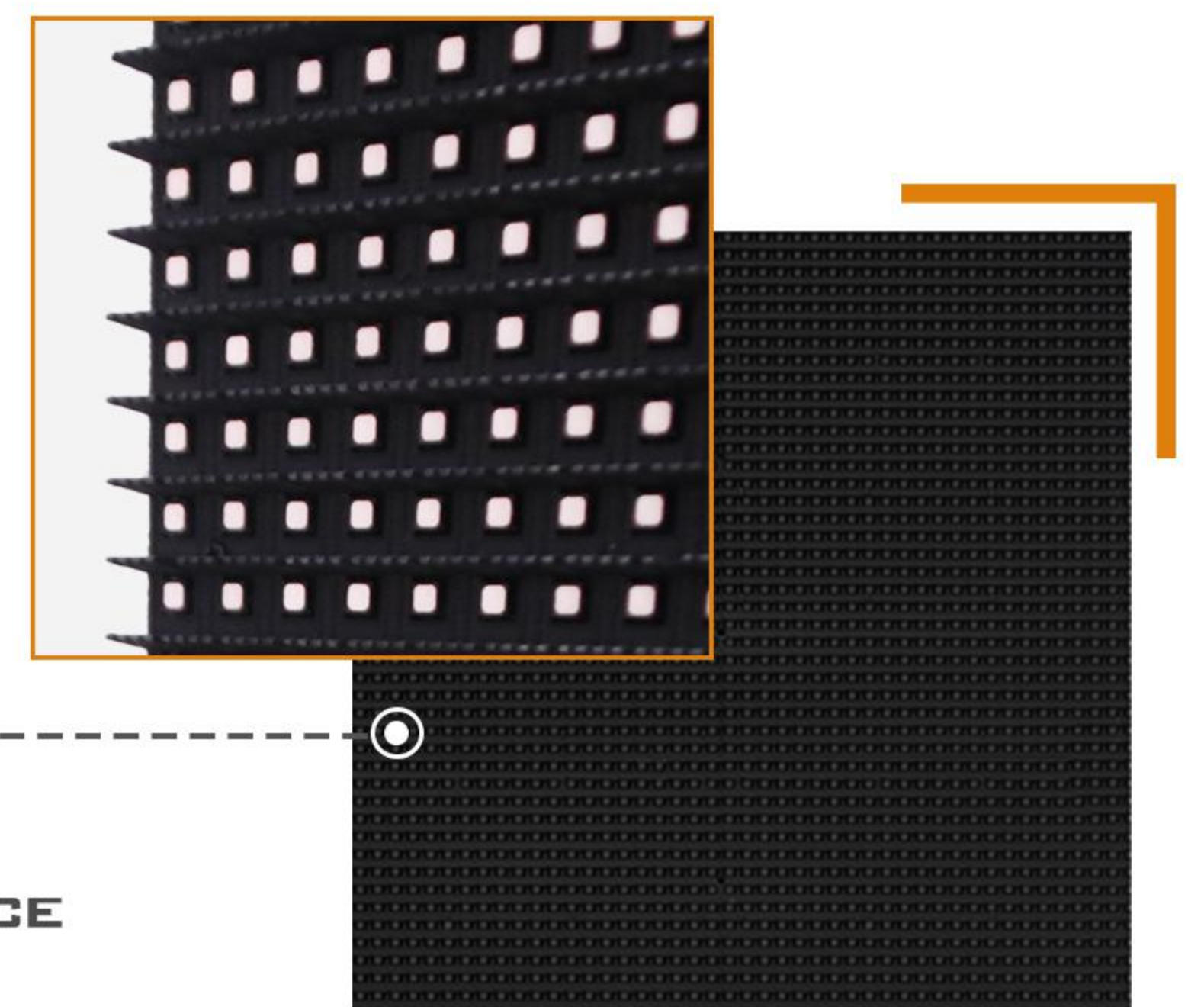
01 FAST AND EASY MAINTENANCE



- STEP 1** USE "T" TYPE WRENCH AND INSERT THE HOLES INSIDE MODULE, TURN RIGHT TO UNLOCK TO SCREW;
- STEP 2** UNLOCK ALL SCREWS, TAKE THE MODULE OUT OF CABINET.
- STEP 3** CHECK AND DISCONNECT THE POWER PLUG AND DATA CABLES.

HIGH CONTRAST

02



MECHANICAL ACCURACY HIGHER MASK CAP DESIGN
HIGHER MASK CAP DESIGNED AND TESTED FOR A BETTER PERFORMANCE
SPECIAL PROTECTION TO OUTDOOR ADVERTISING

03 INNOVATED SEAMLESS CONNECTION



NO-GAP ASSEMBLY, CUSTOMISED STRUCTURE
SAFTY LOCK PROVIDES BETTER CONNECTION, MECHANICAL ACCURACY
NO GAP ASSEMBLY, DIE CASTING ALUMINUM CABINET MATERIAL
HIGH PRECISION AND INTEGRAL STRUCTURE DESIGN



PATHE CINEMA LEISURE TIME



STADIUM PROJECT IN HOUSTON



INTERNATIONAL AIRPORT ADVERTISING



UK TRAILER ENTERTAINMENT DISPLAY



LARGE BUILDING FASHION ADVERTISING



PERIMETER SPORTS LED DISPLAY



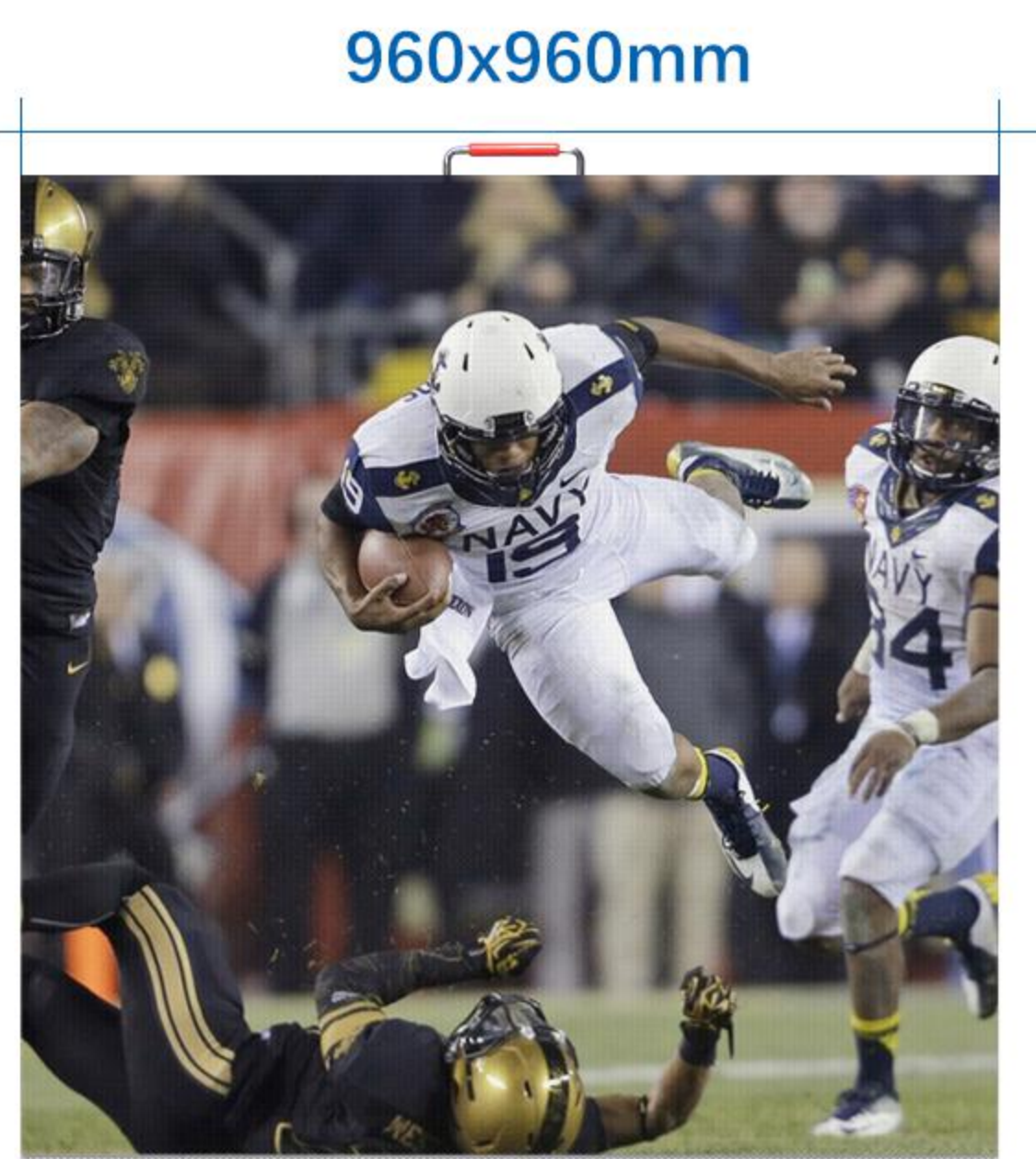
www.newstar-led.com



SHENZHEN NEWSTAR OPTOELECTRONICS CO., LTD

No.10, Kukeng Ave., Tongfuyu Industry Park,
Guanlan Str. Longhua District, Shenzhen City, China

(86) 131 2896 3818 info@newstar-led.com




FC Series	FC400	FC500
Pixel Pitch	4 mm	5 mm
Pixel Configurion	SMD1921	SMD1921
Module Size (WxH)	320 x 320 mm	320 x 320 mm
Panel Dimension	960 x 960 mm	960 x 960 mm
Panel Dimension (Inch)	37.79"x37.79"	37.79"x37.79"
Panel Resolution (H x V)	240x 240	192 x 192
Drive Mode	1/10	1/8
Brightness	6000 cd/m ² nits	6500 cd/m ² nits
Color processing (Bit)	16	16
Grey Level	65536	65536
Refresh Rate	≥1920 Hz	≥1920 Hz
Pixel Density(dots/m ²)	62500	40000
Module Resolution	80 x 80 dots	64 x 64 dots
Viewing Angle (H/V)	140/140	140/140
Input Voltage (V)	AC110V-240V	AC110V-240V
Input Power Frequency (Hz)	50/60	50/60
Power Consumption (Avg)(W/m ²)	277	277
Power Consumption (Max)(W/m ²)	≤830	≤830
Frame Material	Die Cast Aluminum	Die Cast Aluminum
Weight Per Panel	34 kg	34 kg
Operational Temp / Humidity	-20°-60°C, 10-90% RH -4°-122°F, 10-90% RH	-20°-60°C, 10-90% RH -4°-122°F, 10-90% RH
IP Rating	Outdoor IP65	Outdoor IP65
Maintenance Method	Front & Rear	Front & Rear
Warrenty	2 Years	2 Years
Maintenance Method	Front & Rear	Front & Rear
Certifications		

NewStar

Display Solution

SHENZHEN NEWSTAR OPTOELECTRONICS CO., LTD

 +86 131 2896 3818

 +86 755 2946 9129

 info@newstar-led.com

 www.newstar-led.com

 No.10, Kukeng Ave., Tongfuyu Industry Park,
Guanlan Str. Longhua District, Shenzhen City, China

